



# 40 years of ABVs, 10 years of Ginfo and where are we going from here?

**Matt Shaffer**  
CEO, DataGene





Craig Sernik  
Greg Sewinsky  
Lorie Shaffer



Matthew Shaff  
Angela Shelham  
Janet Shelham



Gina Shellenbarger  
Ken Shepard  
Brian Shipley



Kenneth Shollenberger  
Jennifer Siege  
Amy Smith



Kim Smith  
Amy Spice  
Terri Sprinkle  
Joel Staley  
Larry Stewart  
Michele Strashensky



Jason Stull  
Beth Svarny  
Keith Swartz  
Jessica Thompson  
Niki Tofani  
James Tribley



Matthew  
Trudeau  
Becky Vath  
Michael Vigus  
Craig Walls  
Ronald Walker  
Chris Walter  
Heather  
Wardale



Mike Weir  
Denny Willaman  
James  
Williams  
Scott Williams  
Kim Wingard  
Jay Wylie  
Gene Zahnrer



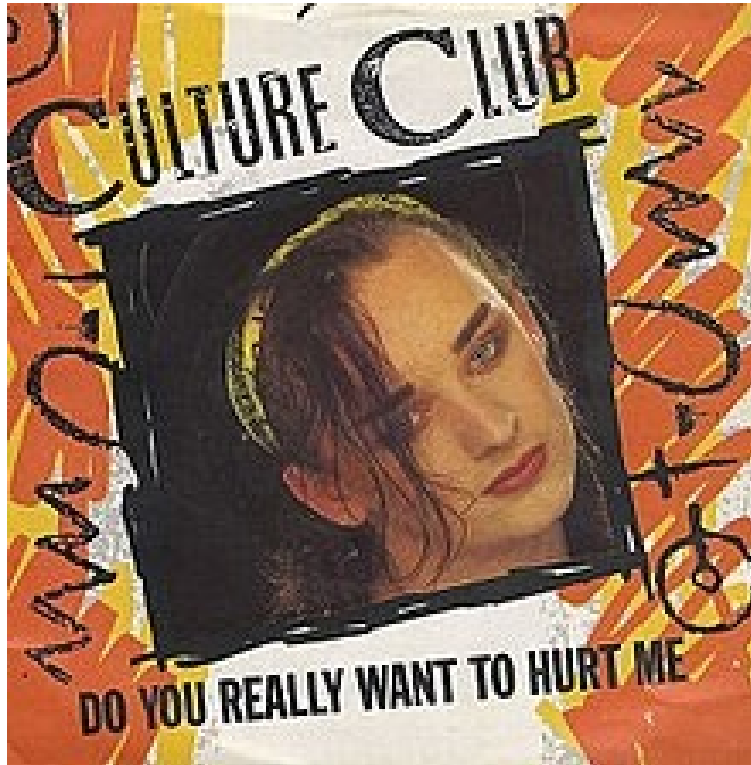
## Junior High Clubs

JUNIOR HIGH  
STUDENT COUNCIL  
Mrs. Smith,  
Mrs. Dicks,  
Advisors



JUNIOR HIGH  
LIBRARY CLUB  
Mrs. Peterson,  
Advisor





Kill Bill, Sza



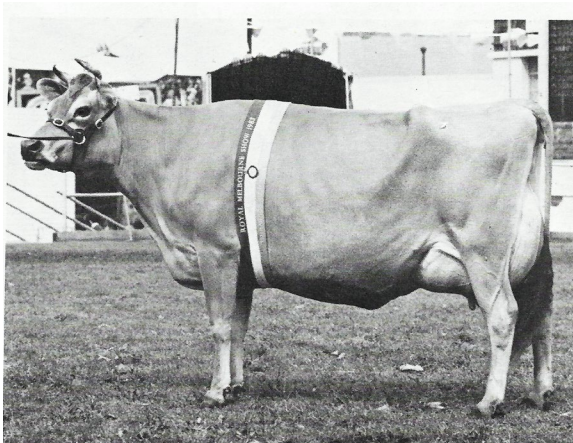


<https://www.computerhistory.org/timeline/1983/>

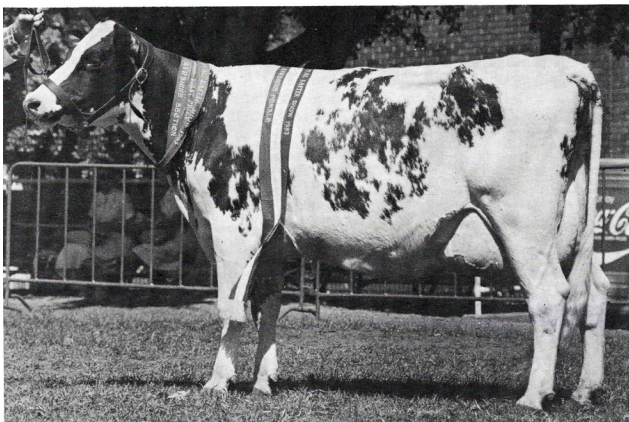


<https://www.apple.com/au/newsroom/2023/01/apple-unveils-macbook-pro-featuring-m2-pro-and-m2-max/>

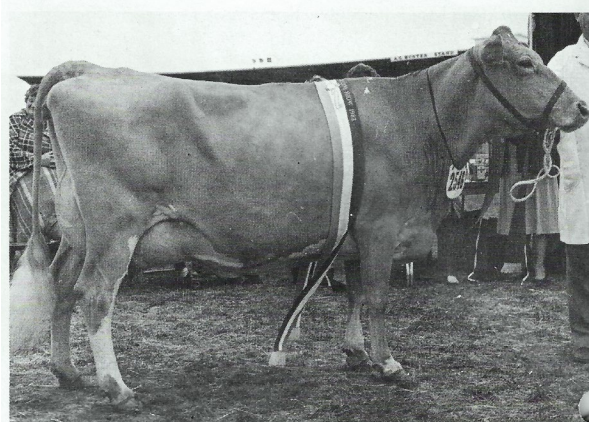




Champion Melbourne 1983  
**Verdon Vins Sandra-R & J Perret**



Champion Melbourne and Sydney 1983  
**Paschendaale Petrina-E.E. & J.E. Eagles**



Champion Melbourne 1983  
**Devon Park Moonbeam-W.L.P. Bond**



Champion Melbourne 1983  
**Wranhi Forbes Criss EX-W.S. Adams & Sons**



Champion IDW 2023  
**Kings Vale Joel Madge-R, H & M Perrett**



Champion IDW 2023  
**Paschendaale Klassy Tri Time-Munden Farms & Eagles**



Champion IDW 2023  
**Kerrilyn Pistoll-Peach-N & S Wilkie**



Champion IDW 2023  
**Avonlea Stanley Cup Evie-J & M Deenen and D & A Mathews**



BREED : FRIESIAN

ORDER : BULLS WITH TOP FAT ABV FIRST

SIRE ID	NASIS ID	NAME	AUST BREEDING VALUE			RELIABILITY %	AUST BREED VALUE		
			MILK	FAT	FAT %		PROTEIN	PROT %	%
A REDO	11FFS31	WANGARUKA REDO	1225	39.1	-0.28	75			
A THIOV10	17FFV10	THIO WINDERMERE V10 (W106)	107	38.9	0.73	98	4.9	0.00	88
A 308691	70FFL03	ROYBROOK STARLITE	921	32.3	-0.06	78			
A 15FFV02	15FFV02	BARRON VALE STARLITE	940	30.9	-0.16	74			
A THIOV02	17FFV02	THIO WINDERMERE V02 (W97)	275	29.6	0.35	87	17.2	0.10	87
A LUMAK	23FFT01	LELBURNE ROYAL LOUMACK	181	29.2	0.46	93	9.4	0.15	80
A 280596	70FFD01	EDGEWARE WAYNE ACHILLES	797	28.1	-0.07	67			
A NLKC	13FFP10	NEW LINE KRISS COMMODORE	326	27.7	0.32	64			
A 5211	35FFD02	WINDERMERE PERFECT MAX	316	26.6	0.28	93	12.3	0.11	88
A THIOV03	17FFV03	THIO WINDERMERE V03 (W98)	263	26.5	0.31	91	8.9	-0.02	91
A RDV	11FFT23	R'DALE VICTOR	163	26.1	0.48	67	9.2	0.14	64
A MICH	11FFS22	MITTABONG CHALLENGE	878	24.7	-0.32	72			
A 6200	35FFH01	GREYLANDS M.M.SEGIS	183	23.3	0.34	80			
A MXM	11FFS09	MONTANA DOWNS C X MONARCH	235	23.0	0.24	76	7.5	-0.09	73
A 46392	35FFP08	PITCAIRNS LIN TROJAN	680	22.8	-0.13	83			
A THIOV08	17FFV08	THIO WINDERMERE V08 (W104)	706	22.4	-0.10	89	22.7	-0.05	89
A 4209	35FFF01	GAYTON INGA VIC	-192	21.7	0.60	99	0.9	0.11	95
3 9070009494		GLENJOY DARKIE DREAM BOY 2ND	16	21.4	0.47	86			
A FB1021	45FFH09	LINMACK KRISS KING	-108	21.0	0.52	99	-0.3	0.00	95
A ENCH	11FFT02	ENTERPRISE LINMACK CHARLES	-94	21.0	0.59	90	-1.3	0.04	77
A RISS	11FFU23	RISSMORE BONNIE CITATION	312	20.9	0.18	79	16.8	0.05	77
A DEAN	13FFV34	MURRIBROOK MARQUIS DEAN	117	20.4	0.31	70	-2.8	-0.01	59
A ULYS	35FFM08	LESDALE CLL ULYSES	437	20.3	0.04	85	17.1	0.11	69
A 13FFU01	13FFU01	DELORAINIE NORTHERN CHIEF	585	20.2	-0.04	68			
A CRIC	11FFP01	CLINELL RAELENE MAGIC	415	20.0	0.05	90	6.4	-0.18	83
A FERGOY	23FFP03	PITCAIRNS LIN FERGIE	278	20.0	0.13	84			
A 70278	35FFM04	WELBURN P.G. BUTTERMAN	659	19.7	-0.12	92	5.6	-0.25	80
A ALDA	35FFL06	LESDALE LINMACK ALDA	-58	19.3	0.46	89	-7.7	0.04	74
A PREMIER	13FFU21	ROMANAC NED PREMIER	501	19.1	-0.08	75	5.0	0.06	62
A JAND	11FFN09	JAYLEA GALENA ANDREW	75	18.8	0.39	70			
A IDEAL	35FFJ09	PITCAIRNS P.T. IDEALIST	129	18.2	0.26	59			
A WMTG	11FFN01	WINGINANNI M T COMMUNE	-112	18.1	0.47	92	2.8	0.13	76
A DALS	45FFP05	DALESEND CASCADE	422	17.9	0.01	86	7.1	-0.12	67
A CHAR	23FFL01	CHARMSWOOD SOVEREIGN BRUCE	462	17.7	-0.05	89	16.8	-0.27	77
A HBAR	11FFV11	HEYBRIDGE BLACK ARNOLD	535	17.5	-0.11	79	13.2	-0.14	78
A CROSLAN	13FFU28	CROSSLANDS GRIFFLAND	446	17.3	0.07	64			
A OVGW	11FFV21	ONKAVALA GRIFFLAND MIDAS	178	17.2	0.22	84	7.4	0.05	82
A THIOV07	17FFV07	THIO WINDERMERE V07 (W103)	-152	17.2	0.49	98	0.9	0.09	88
A 1204	35FFB01	TUREPO SOVEREIGN	667	17.2	-0.27	71	10.5	-0.16	58
A DELL	11FFR29	KENDALLA PERFECT MAX	116	16.9	0.22	99	9.2	0.06	98

Australian Breeding Value  
Sire Assessments for  
Dairy Sires used in Australia

January 1983



Australian Dairy Herd Improvement Scheme  
8th Floor, 518 St. King Road,  
Melbourne, Victoria 3001  
Telephone: 03 518 730, 51 1720





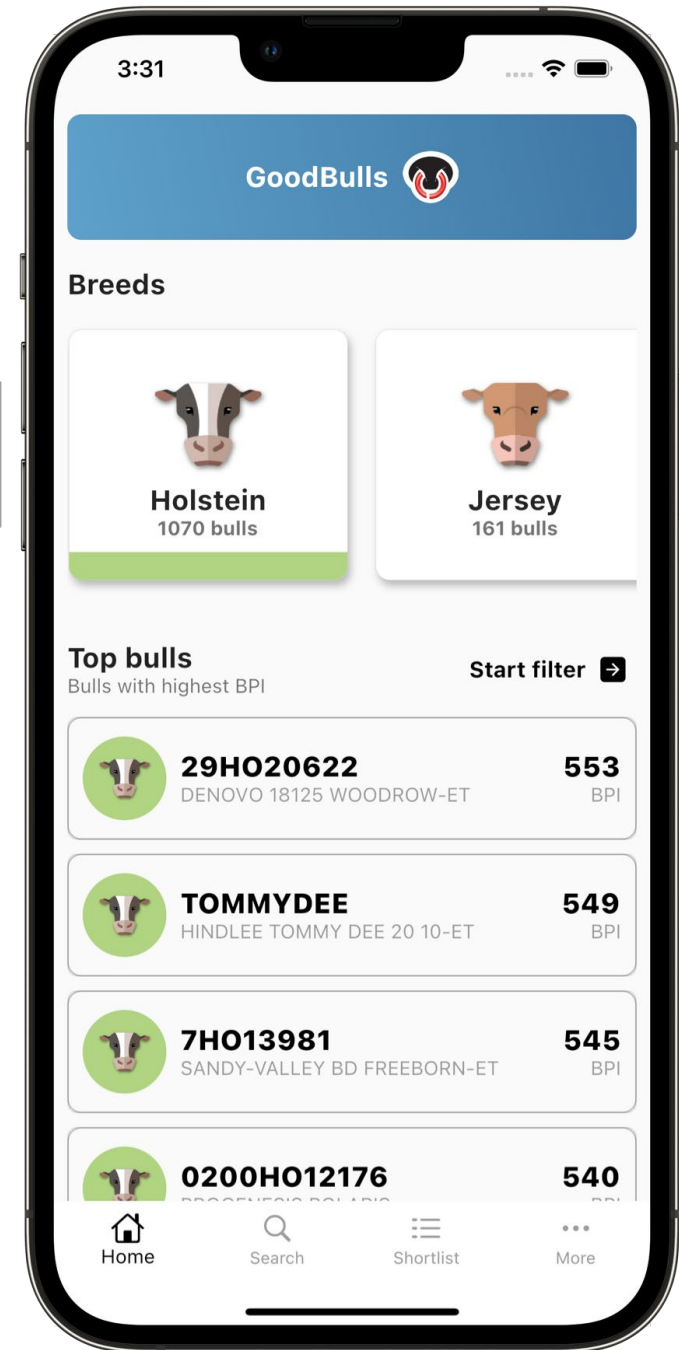
December 2022



Update your  
Good Bulls  
mobile app  
TODAY



Introducing  
3 new breed  
tables  
Australian Red,  
Ayrshire,  
Illawarra



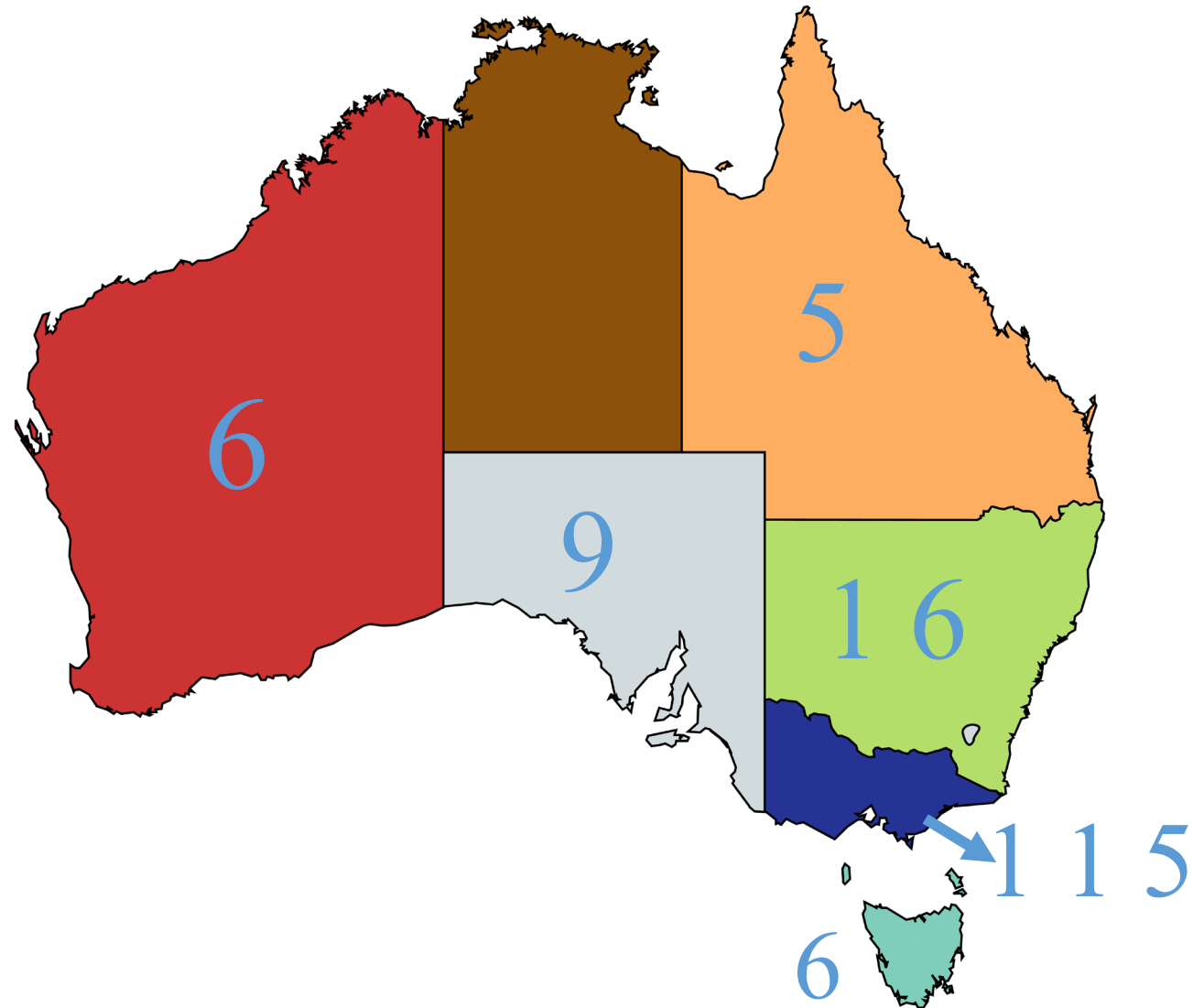




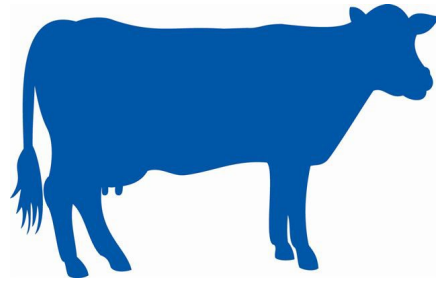
Celebrating 10 years of Ginkgo



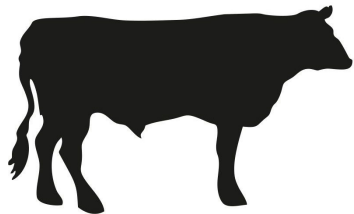
# 157 Ginfo herds



# Australian reference population



7 X



3 X



# Ginfo has increased reliability

## Bulls

BPI: 17 percentage points  
Fertility: 23 percentage points  
Type: 23 percentage points



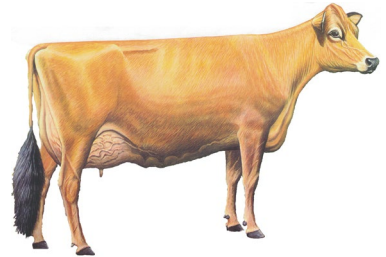
## Cows

BPI: 32 percentage points  
Fertility: 28 percentage points  
Type: 25 percentage points

# Ginfo has increased reliability

## Bulls

BPI: 21 percentage points  
Fertility: 21 percentage points  
Type: 21 percentage points

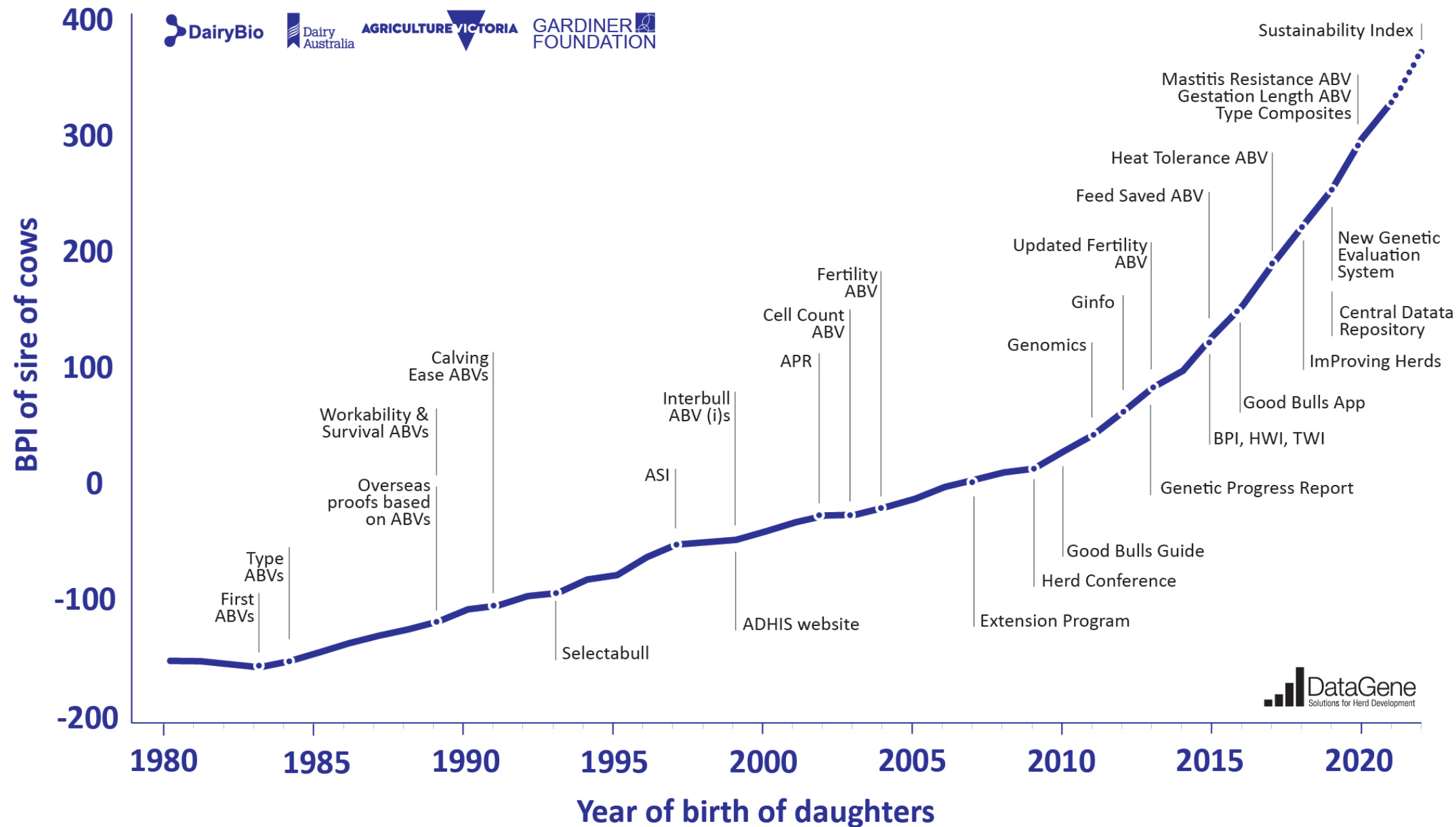


## Cows

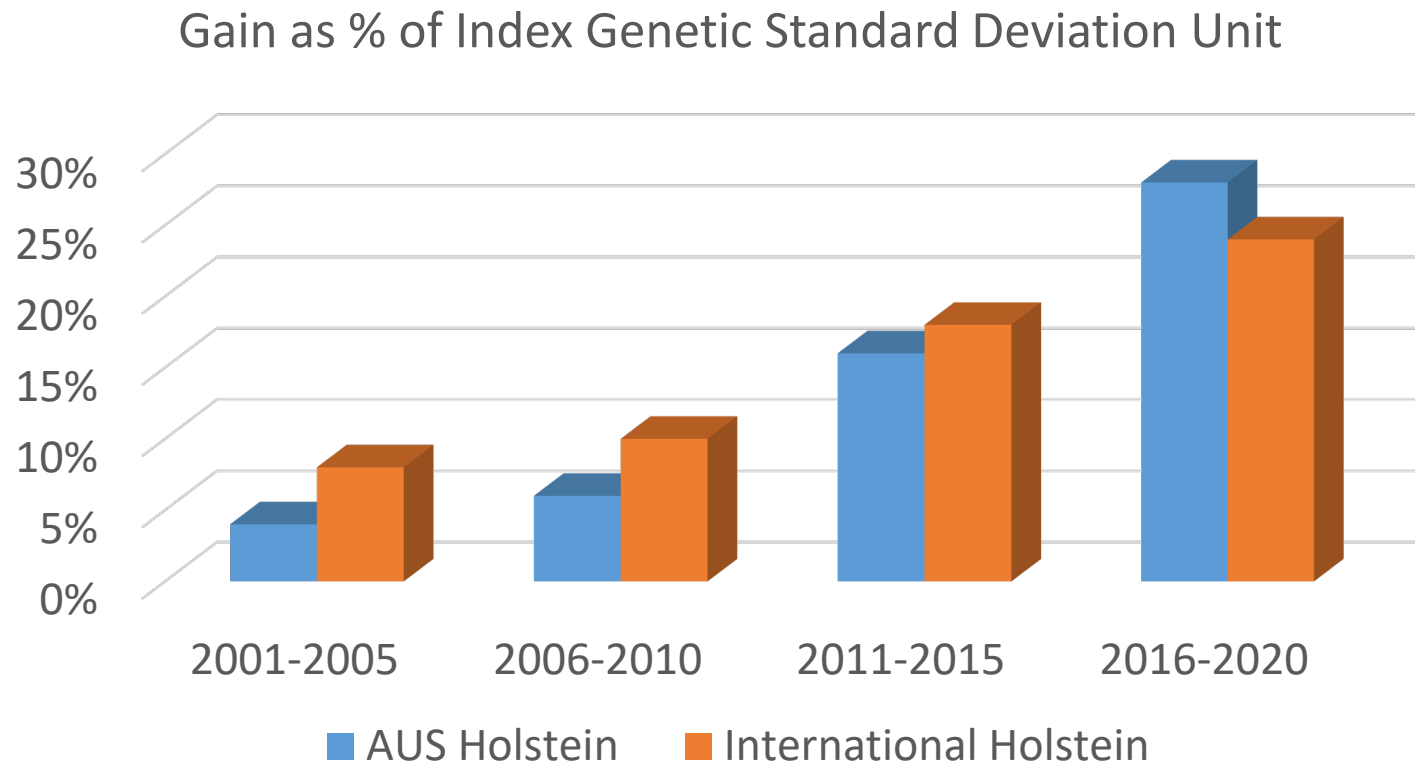
BPI: 33 percentage points  
Fertility: 26 percentage points  
Type: 23 percentage points



# Australian genetic trends (Holstein)



# International Comparison



Source: abacusbio

Includes data from 9 countries across Oceania, North America and Europe.





DISCLAIMER







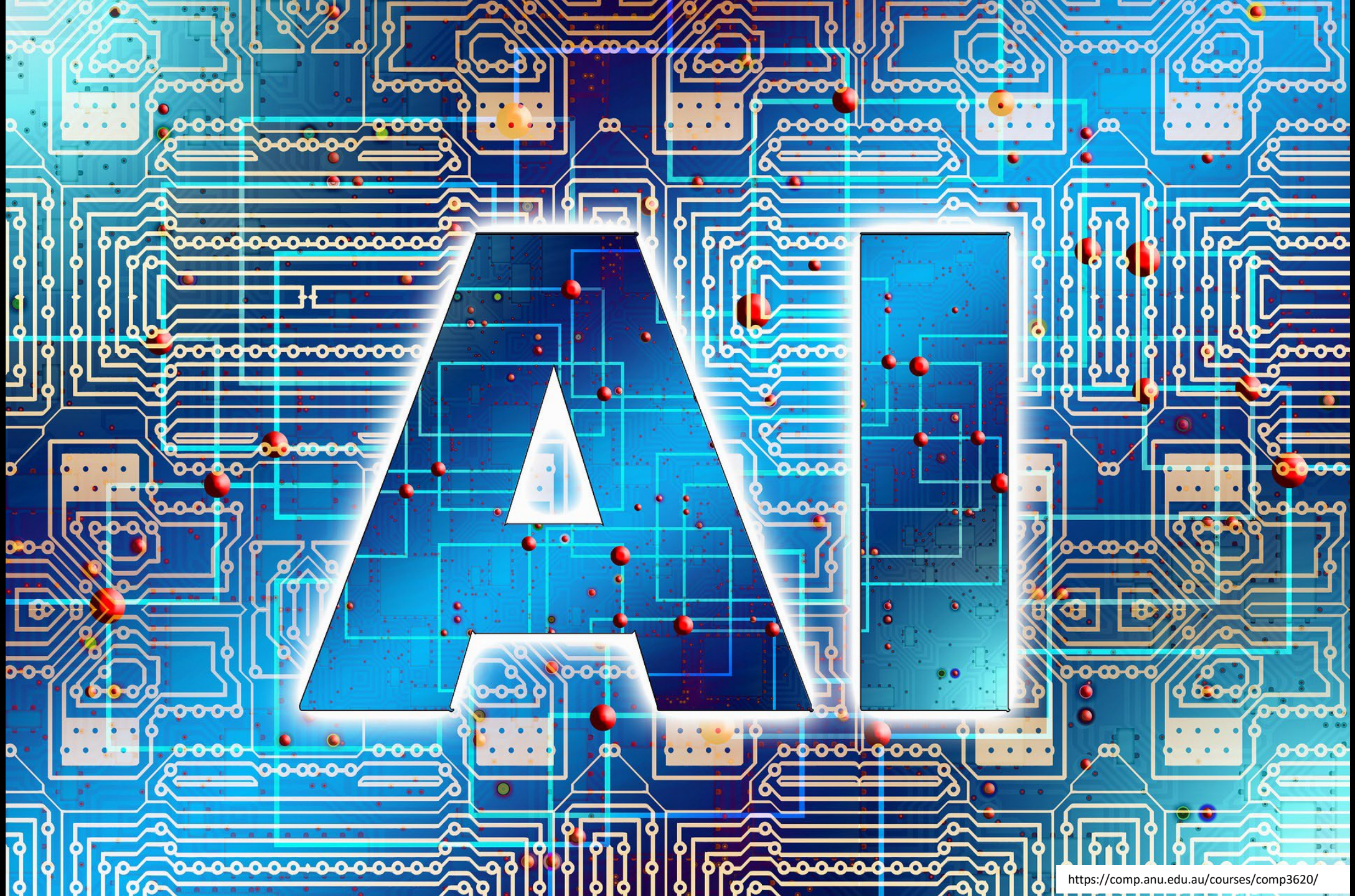














*Thank you*

